

West Michigan

AirCare

Air Medical Transport

2024 Calendar

West Michigan

AirCare

Air Medical Transport

A cooperative program of Ascension Borgess Hospital
and Bronson Methodist Hospital

1-800-922-1234

www.AirCare.org



Mission Statement

We positively impact the quality of life of individuals who utilize our air medical services.

Our core values are: safety, excellence, compassion, teamwork, cost effectiveness, integrity and community service.

Critical Care Capabilities

- » ICU and/or ED experienced RN's who are also licensed Paramedics
- » Extensive continuing education requirements for medical crew members with case reviews, surgical skills lab, scenario based simulation testing and didactic training
- » Emphasis on difficult and advanced airway management training
- » Additional equipment and resources including, but not limited to, advanced burn care management, EPOC Point-of-Care lab testing, 3% Saline for treatment for severe brain injury, vasoactive infusions, Tranexamic Acid (TXA), whole blood and liquid plasma transfusions

Aviation

- » Air Care's twin-engine Eurocopter EC 145 helicopter can facilitate transport for critical patients. In addition, it can carry up to four medical crew members
- » Standard fuel range approaching 436 statute miles
- » Maximum indicated airspeed of 153 miles per hour with a maximum gross weight capacity of 7,887 pounds
- » Average flight altitude is between 1,500 and 2,000 feet above the ground according to Federal Aviation Administration (FAA) weather minimums and clearances
- » Air Care pilots average over 3,000 hours of helicopter flight experience and are experienced under Instrument Flight Rules (IFR)
- » All FAA Part 135 aviation services provided by Metro Aviation, Inc., which maintains exclusive operational control over all aircraft.
- » Air Care's helicopter is maintained by a team of Airframe & Powerplant (A&P) certified maintenance technicians

CAMTS

- » Adherence to the highest standards in the air medical industry with Commission on Accreditations of Medical Transport Systems (CAMTS) accreditation since 1995

Communications

- » Our Air Medical Communication Specialists (ACS) are dedicated to the mission of expedient and safe patient transport
- » Air Care's communication "Comm" center is staffed 24 hours a day, 365 days a year and additionally is the medical command or "MEDCOM" center for Kalamazoo County, relaying EMS alerts and consult requests to Ascension Borgess Hospital and Bronson Methodist Hospital. As well, Air Care is the regional Medical Communication Center (R5 MCC) for the Region 5 Medical Response Coalition
- » ACS receive transport requests and coordinate each mission in a timely fashion using sophisticated software with GPS input to track Air Care's position at all times

West Michigan

AirCare

Air Medical Transport

A cooperative program of Ascension Borgess Hospital
and Bronson Methodist Hospital

Go to www.AirCare.org to submit your photos or schedule a Landing Zone class!

1-800-922-1234

www.AirCare.org

West Michigan

AirCare

Air Medical Transport

A cooperative program of Ascension Borgess Hospital
and Bronson Methodist Hospital

1-800-922-1234

www.AirCare.org



January

SUNDAY	MONDAY	TUESDAY	WEDNESDAY	THURSDAY	FRIDAY	SATURDAY
	1 New Year's Day	2	3 Last Quarter	4	5	6
7	8	9	10	11 New Moon	12	13
14	15 Martin Luther King, Jr. Day Civil Rights Day	16	17 First Quarter	18	19	20
Go to www.AirCare.org to submit your photos!						
21	22	23	24	25 Full Moon	26	27
28	29	30	31	DECEMBER 2023 1 2 3 4 5 6 7 8 9 10 11 12 13 14 15 16 17 18 19 20 21 22 23 24 25 26 27 28 29 30 31		FEBRUARY 2024 1 2 3 4 5 6 7 8 9 10 11 12 13 14 15 16 17 18 19 20 21 22 23 24 25 26 27 28 29



Photo by Steve Hostetter



Photo by Brian Vanderberg

West Michigan

AirCare

Air Medical Transport

A cooperative program of Ascension Borgess Hospital
and Bronson Methodist Hospital

1-800-922-1234

www.AirCare.org



February

Jacqui Zurwalski - Participant of the WMAC Observer Program (Photo by Steve Hostettler)

SUNDAY	MONDAY	TUESDAY	WEDNESDAY	THURSDAY	FRIDAY	SATURDAY
JANUARY 2024 1 2 3 4 5 6 7 8 9 10 11 12 13 14 15 16 17 18 19 20 21 22 23 24 25 26 27 28 29 30 31	MARCH 2024 1 2 3 4 5 6 7 8 9 10 11 12 13 14 15 16 17 18 19 20 21 22 23 24 25 26 27 28 29 30 31			1 Black History Month	2 Last Quarter Groundhog Day	3 Chinese New Year
4	5	6	7	8	9 New Moon	10
11	12	13	14	15	16 First Quarter	17
Landing Zone classes are easy to coordinate ... go to www.AirCare.org to schedule yours!						
		Mardi Gras	St. Valentine's Day Ash Wednesday			
18	19 Presidents' Day	20	21	22	23	24 Full Moon
25	26	27	28	29		



Photo by Jacqui Zurwalski



Photo by Steve Hostettler

West Michigan

AirCare

Air Medical Transport

A cooperative program of Ascension Borgess Hospital
and Bronson Methodist Hospital

1-800-922-1234

www.AirCare.org

March



SUNDAY	MONDAY	TUESDAY	WEDNESDAY	THURSDAY	FRIDAY	SATURDAY
FEBRUARY 2024 1 2 3 4 5 6 7 8 9 10 11 12 13 14 15 16 17 18 19 20 21 22 23 24 25 26 27 28 29	APRIL 2024 1 2 3 4 5 6 7 8 9 10 11 12 13 14 15 16 17 18 19 20 21 22 23 24 25 26 27 28 29 30				1	2
3 Last Quarter	4	5	6	7	8	9
10 New Moon	11	12	13	14	15	16
Go to www.AirCare.org to submit your photos!						
Daylight Savings Time Begins						
17 First Quarter St. Patrick's Day	18 Orthodox Lent Begins	19 Spring Equinox	20	21 AirCare 31st Anniversary 1993-2023	22	23
24 Palm Sunday	25 Full Moon	26	27	28	29	30
31 Easter Sunday					Good Friday	

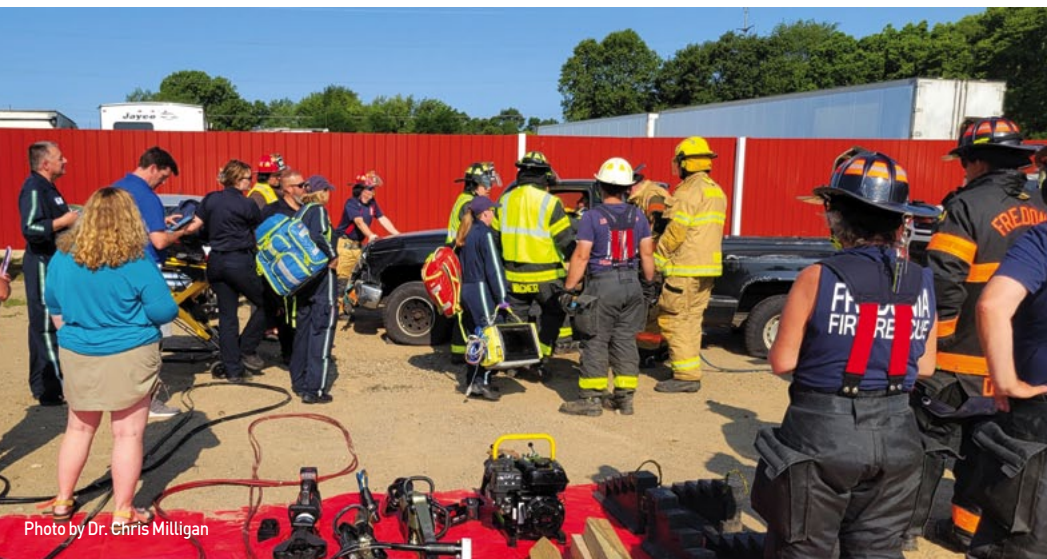


Photo by Dr. Chris Milligan



Photo by Dr. Chris Milligan

West Michigan

AirCare

Air Medical Transport

A cooperative program of Ascension Borgess Hospital
and Bronson Methodist Hospital

1-800-922-1234

www.AirCare.org



April

SUNDAY	MONDAY	TUESDAY	WEDNESDAY	THURSDAY	FRIDAY	SATURDAY
	1 Last Quarter April Fool's Day Easter Monday (Canada)	2	3	4	5	6
7	8 New Moon	9	10	11	12	13
14	15 First Quarter	16	17	18	19	20
Go to www.AirCare.org to submit your photos or schedule a Landing Zone class!						
21	22 Earth Day Passover Begins at Sundown	23	24 Full Moon Administrative Professionals' Day	25	26 Arbor Day	27
28	29	30 Last Day of Passover			MARCH 2024 1 2 3 4 5 6 7 8 9 10 11 12 13 14 15 16 17 18 19 20 21 22 23 24 25 26 27 28 29 30 31	MAY 2024 1 2 3 4 5 6 7 8 9 10 11 12 13 14 15 16 17 18 19 20 21 22 23 24 25 26 27 28 29 30 31



Photo by Dr. Chris Milligan

West Michigan

AirCare

Air Medical Transport

A cooperative program of Ascension Borgess Hospital
and Bronson Methodist Hospital

1-800-922-1234

www.AirCare.org



May

SUNDAY	MONDAY	TUESDAY	WEDNESDAY	THURSDAY	FRIDAY	SATURDAY
APRIL 2024 1 2 3 4 5 6 7 8 9 10 11 12 13 14 15 16 17 18 19 20 21 22 23 24 25 26 27 28 29 30	JUNE 2024 1 2 3 4 5 6 7 8 9 10 11 12 13 14 15 16 17 18 19 20 21 22 23 24 25 26 27 28 29 30		1  Last Quarter	2	3	4
5	6	7  New Moon	8	9	10	11
National Nurses Week – Honoring their contributions and sacrifices and reminds us to thank the medical professionals who keep us healthy.						
Cinco de Mayo Orthodox Easter (Pascha)						
12	13	14	15  First Quarter	16	17	18
Mother's Day						Armed Forces Day
19	20	21	22	23	24  Full Moon	25
National Emergency Medical Services (EMS) Week – Honoring the dedication of all emergency service workers for their tireless dedication to saving lives.						
	Victoria Day (Canada)					
26	27	28	29	30  Last Quarter	31	
	Memorial Day					



Photo by Brian Vanderberg



Photo by Brian Vanderberg

West Michigan

AirCare

Air Medical Transport

A cooperative program of Ascension Borgess Hospital
and Bronson Methodist Hospital

1-800-922-1234

www.AirCare.org



June

SUNDAY	MONDAY	TUESDAY	WEDNESDAY	THURSDAY	FRIDAY	SATURDAY	
MAY 2022 1 2 3 4 5 6 7 8 9 10 11 12 13 14 15 16 17 18 19 20 21 22 23 24 25 26 27 28 29 30 31	JULY 2022 1 2 3 4 5 6 7 8 9 10 11 12 13 14 15 16 17 18 19 20 21 22 23 24 25 26 27 28 29 30 31					1	
2	3	4	5	6	 New Moon	7	8
9	10	11	12	13	14	 First Quarter	15
Go to www.AirCare.org to submit your photos or schedule a Landing Zone class!							
16	17	18	19	20	21	 Full Moon	22
Father's Day			Juneteenth	Summer Solstice	Flag Day		
23	24	25	26	27	28	 Last Quarter	29
30							



Photo by Brian Vanderberg

West Michigan

AirCare

Air Medical Transport

A cooperative program of Ascension Borgess Hospital
and Bronson Methodist Hospital

1-800-922-1234

www.AirCare.org



July

Photo by Patman Droneography

SUNDAY	MONDAY	TUESDAY	WEDNESDAY	THURSDAY	FRIDAY	SATURDAY
	1 Canada Day	2	3	4 Independence Day	5 New Moon	6
7	8	9	10	11	12	13 First Quarter
14	15	16	17	18	19	20
Save the Date for the 4th Annual Air Care Charity Golf Outing at The Medalist Golf Club in Marshall, Michigan – August 24th! Visit www.AirCare.org for more information or scan the QR code below.						
21 Full Moon	22	23	24	25	26	27 Last Quarter
28 Parents' Day	29	30	31	Scan the QR code to register for the Air Care Golf Outing 	JUNE 2024 1 2 3 4 5 6 7 8 9 10 11 12 13 14 15 16 17 18 19 20 21 22 23 24 25 26 27 28 29 30	AUGUST 2024 1 2 3 4 5 6 7 8 9 10 11 12 13 14 15 16 17 18 19 20 21 22 23 24 25 26 27 28 29 30 31



Photo by Patman Droneography



Photo by Patman Droneography

West Michigan

AirCare

Air Medical Transport

A cooperative program of Ascension Borgess Hospital
and Bronson Methodist Hospital

1-800-922-1234

www.AirCare.org



August



Photo by Kyle McClure

SUNDAY	MONDAY	TUESDAY	WEDNESDAY	THURSDAY	FRIDAY	SATURDAY
JULY 2024 1 2 3 4 5 6 7 8 9 10 11 12 13 14 15 16 17 18 19 20 21 22 23 24 25 26 27 28 29 30 31	SEPTEMBER 2024 1 2 3 4 5 6 7 8 9 10 11 12 13 14 15 16 17 18 19 20 21 22 23 24 25 26 27 28 29 30		Scan the QR code to register for the AirCare Golf Outing 	1	2	3
4 	5 Civic Holiday (Canada)	6	7	8	9	10
11	12 	13	14	15	16	17
Go to www.AirCare.org to submit your photos or schedule a Landing Zone class!						
18	19  National Aviation Day	20	21	22	23	24 AirCare 4th Annual Charity Golf Outing The Medalist Golf Club Marshall, MI
25	26 	27	28	29	30	31



Photo by Steve Hostetter

West Michigan

AirCare

Air Medical Transport

A cooperative program of Ascension Borgess Hospital
and Bronson Methodist Hospital

1-800-922-1234

www.AirCare.org



September

SUNDAY	MONDAY	TUESDAY	WEDNESDAY	THURSDAY	FRIDAY	SATURDAY
1	2 New Moon	3	4	5	6	7
8 Grandparents' Day	9 Labor Day	10	11 First Quarter	12	13	14
15	16	17 Full Moon	18	19	20	21
Go to www.AirCare.org to submit your photos!						
22 Autumn Equinox	23	24 Last Quarter	25	26	27	28
29	30				AUGUST 2024 1 2 3 4 5 6 7 8 9 10 11 12 13 14 15 16 17 18 19 20 21 22 23 24 25 26 27 28 29 30 31	OCTOBER 2024 1 2 3 4 5 6 7 8 9 10 11 12 13 14 15 16 17 18 19 20 21 22 23 24 25 26 27 28 29 30 31



Photo by Brian Vanderberg

Photo by Brian Vanderberg

West Michigan

AirCare

Air Medical Transport

A cooperative program of Ascension Borgess Hospital
and Bronson Methodist Hospital

1-800-922-1234

www.AirCare.org



October

SUNDAY	MONDAY	TUESDAY	WEDNESDAY	THURSDAY	FRIDAY	SATURDAY
SEPTEMBER 2024 1 2 3 4 5 6 7 8 9 10 11 12 13 14 15 16 17 18 19 20 21 22 23 24 25 26 27 28 29 30	NOVEMBER 2024 1 2 3 4 5 6 7 8 9 10 11 12 13 14 15 16 17 18 19 20 21 22 23 24 25 26 27 28 29 30	1	2 ● New Moon Rosh Hashanah (begins at sunset)	3	4	5
6	7	8	9	10 ☾ First Quarter	11 Yom Kippur (begins at sunset)	12 Yom Kippur (until nightfall)
13	14 Indigenous Peoples' Day Canadian Thanksgiving	15	16 Boss's Day	17 ☉ Full Moon	18	19 Sweetest Day
Go to www.AirCare.org to submit your photos!						
20	21	22	23	24 United Nations Day ☾ Last Quarter	25	26
27	28 National First Responders Day	29	30	31 Halloween		



Photo by Kyle McClure



Photo by Kyle McClure

West Michigan

AirCare

Air Medical Transport

A cooperative program of Ascension Borgess Hospital
and Bronson Methodist Hospital

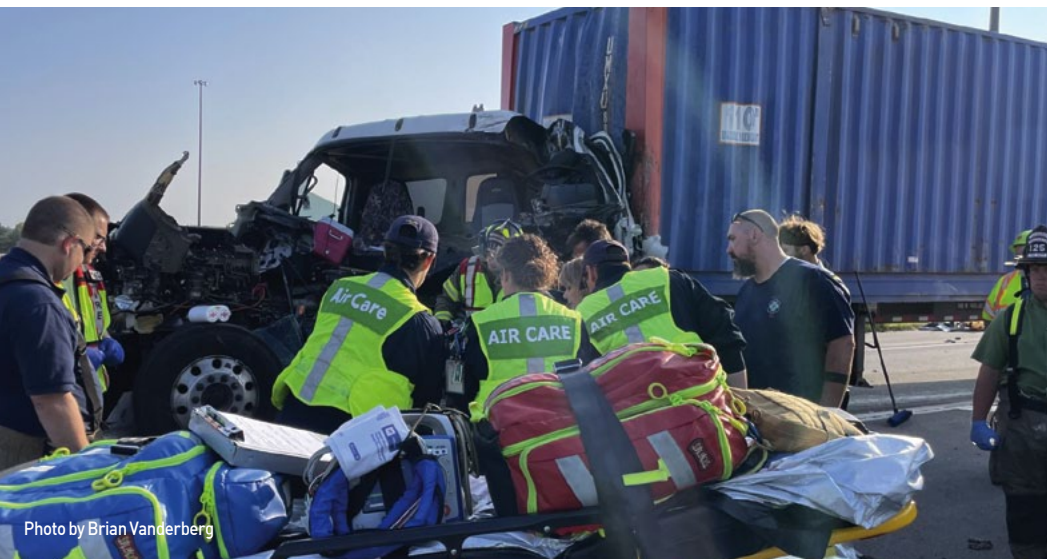
1-800-922-1234

www.AirCare.org



November

SUNDAY	MONDAY	TUESDAY	WEDNESDAY	THURSDAY	FRIDAY	SATURDAY
OCTOBER 2024 1 2 3 4 5 6 7 8 9 10 11 12 13 14 15 16 17 18 19 20 21 22 23 24 25 26 27 28 29 30 31	DECEMBER 2024 1 2 3 4 5 6 7 8 9 10 11 12 13 14 15 16 17 18 19 20 21 22 23 24 25 26 27 28 29 30 31				1  New Moon 2	
3 Daylight Savings Time Ends	4	5 Election Day	6	7	8	9  First Quarter
10	11 Veterans Day Remembrance Day (Canada)	12	13	14	15  Full Moon 16	
Go to www.AirCare.org to submit your photos!						
17	18	19	20	21	22  Last Quarter 23	
24	25	26	27	28 Thanksgiving Day	29	30



West Michigan

AirCare

Air Medical Transport

A cooperative program of Ascension Borgess Hospital
and Bronson Methodist Hospital

1-800-922-1234

www.AirCare.org



December

SUNDAY	MONDAY	TUESDAY	WEDNESDAY	THURSDAY	FRIDAY	SATURDAY
1 New Moon	2	3	4	5	6	7
8 First Quarter	9	10	11	12	13	14
15 Full Moon	16	17	18	19	20	21
Go to www.AirCare.org to submit your photos!						
22 Last Quarter	23	24 Christmas Eve	25 Christmas Day Hanukkah (begins at sunset)	26 Kwanzaa Boxing Day (Canada)	27	28 Winter Solstice
29	30	31 New Year's Eve			NOVEMBER 2024 1 2 3 4 5 6 7 8 9 10 11 12 13 14 15 16 17 18 19 20 21 22 23 24 25 26 27 28 29 30	JANUARY 2025 1 2 3 4 5 6 7 8 9 10 11 12 13 14 15 16 17 18 19 20 21 22 23 24 25 26 27 28 29 30 31



Photo by Kurtis Washburn



Photo by Steve Hostetter



West Michigan

AirCare

Air Medical Transport

*A cooperative program of Ascension Borgess Hospital
and Bronson Methodist Hospital*

*All FAA Part 135 aviation services provided by
Metro Aviation, Inc., which maintains exclusive
operational control over all aircraft.*

1-800-922-1234
www.AirCare.org

 **camts**
Commission on Accreditation of Medical Transport Systems