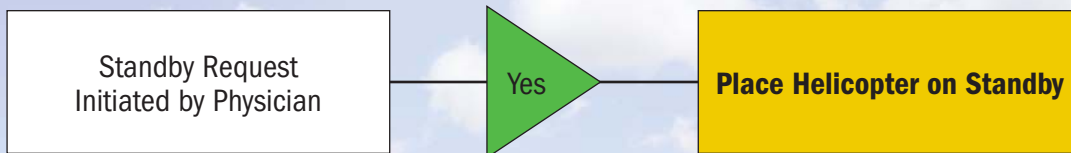


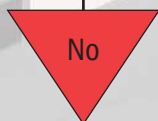
Community Hospital Fly Guide

Air Care Activation Criteria

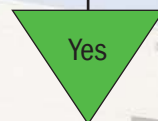


Patient Criteria for Air Transport of Trauma Patient Includes One or More of the Following:

- **Time Dependent** Treatment, Procedure or Specialist not available at referring facility (Surgical; Cardiovascular; Neurovascular; Intensivist; Pulmonary; or Pediatrics)
- **Treatment or Procedure** not available from local transporting agencies (Patient with or at risk for unstable/complicated airway [Requiring surgical intervention and/or Requiring Medication Assisted Intubation]; Mechanical Ventilation Required; Chest tube insertion required or high potential for occurrence; Blood Product Administration Required; Vasoactive Medications Required; Antidysrhythmic Medications Required; or Invasive Monitoring Required)
- **Potential for delays** with ground transport to worsen clinical condition (Unstable hemodynamic status [age relevant]; Multi-system organ failure; or Critical Pregnant Patient without imminent delivery)
- **Physician Discretion** (criteria not above, physician still requests air transport)



Assist Physician With Alternatives As Applicable & Available



Launch Helicopter for Transport to Regional Trauma Center

Kalamazoo Regional Trauma Centers Provide Automatic Acceptance of Critical Trauma Patients from Regional Hospitals. Please call your desired accepting facility once West Michigan Air Care has been activated.